

# A NEW STANDARD OF SIMPLICITY AND RELIABILITY IN MULTI-GAS DETECTION

---

Honeywell BW™ Next Generation Multi-Gas Platform

---



**Honeywell**

# THE BEST OF HONEYWELL BW™ IN THREE PORTABLE COMPLIANCE DETECTORS

From pioneering a fixed-life single-gas detector to launching the first compact multi-gas detector with one-button operation, Honeywell BW™ has set the standard for quality, reliability and ease of use in portable gas detection.

Now, with the **BW Next Generation Multi-Gas Platform**, we've combined the best features of past portable gas detectors with new capabilities of the future. So you can get the Honeywell BW™ experience you love — plus new features that make it even easier to ensure multi-gas safety and compliance.

## NUMEROUS APPLICATIONS

Whether you're on an oil rig in Texas or a steel plant in India, the Honeywell BW™ Next Generation Multi-Gas Platform has a portable multi-gas detector to meet your requirements.

### Honeywell BW™ Icon

Fixed-life, 2-year, 4-gas detector for the hazards workers face most often



The first icon-based display for quick decisions – and training. [See page 6](#)

### Honeywell BW™ Icon+

Serviceable 4-gas detector with a choice of 6 sensors



### Honeywell BW™ Flex

Serviceable 5-gas detector with a choice of more than 15 sensors



One of the smallest, lightest 5-gas portables on the market. [See page 7](#)

COMING  
SOON

# YOUR WORKERS' RELIABLE, EVERYDAY COMPANION FOR SAFETY

Honeywell BW™ Icon/Flex detectors go wherever your workers do, continuing to sense gas even in challenging environments.

## ALL THREE DETECTORS GIVE YOU:

- **2 months of battery runtime.** Get two months of continuous gas detection on a 4.5-hour charge — and up to four months if you turn off the detector at the end of each shift. That means no daily charging and no unexpected downtime.
- **Advanced infrared technology.** The long battery runtime is due to Honeywell's infrared sensor for combustible gases at the lower explosive limit (LEL), which draws 100 times less power than traditional catalytic bead sensors.
- **Reliable LEL detection — with no sensor poisoning.** Honeywell's infrared LEL sensor is immune to airborne contaminants such as greases and other silicones that can erode some LEL sensors. That means the sensor will accurately monitor combustibles throughout the detector's lifespan — with less time and cost for sensor maintenance.
- **Extreme ingress protection for total confidence.** With IP ratings of 66 and 68, BW Icon/Flex detectors stand up to dust *and* immersion in water. So whether you drop your detector in a tank or use it in a steel mill, it will continue to operate effectively.

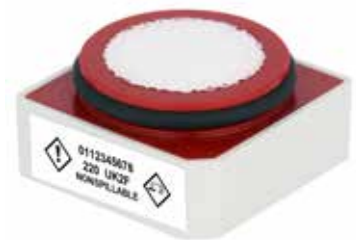


## FAST, ACCURATE SENSING – EVEN IN EXTREME CONDITIONS

Icon/Flex detectors have 1 Series sensors, which are one-third the height of the industry standard. This slim profile not only makes for a lighter, smaller detector — it also means quicker sensor response time, because gas diffuses into the sensors more quickly.

These sensors will respond to dangerous levels of gas within seconds, even in temperatures from -40°C to 55°C (-40°F to 131°F) — as well as transient pressure, humidity and other environmental extremes.

So no matter how harsh the setting, workers will be alerted to gas hazards so they can leave the area.



*1 Series – the highest standard of sensor quality and reliability*

# LIGHTWEIGHT DETECTORS. HEAVYWEIGHT PERFORMANCE.

Like other Honeywell BW™ products, the Icon/Flex portable detectors are engineered for simple operation and straightforward notification, including bright lights, vibration and a 95-decibel alert. So if there's a gas threat, your workers will know it.

- **Keep workers safe without weighing them down.**

Workers want to use portable gas detectors that are easy to handle. Icon/Flex delivers the ease of use they expect from Honeywell BW™. Each detector is small, lightweight and nonintrusive to wear, while tough enough for harsh conditions.

- **One-button operation: No expertise required.**

Icon/Flex detectors have only one button for simple use — even if you're wearing gloves — which prevents tampering while reducing training time.



- **Safety at a glance.**

Want to quickly determine whether a detector is in compliance? Just look for Honeywell's patented IntelliFlash™ — a flashing green light, visible from a distance, that indicates the detector has been bump tested and is monitoring correctly. An amber light indicates the need for maintenance.



## EFFICIENT INSTRUMENT MANAGEMENT

Icon/Flex portable detectors are compatible with the IntelliDoX instrument management system, which combines smart docking modules with the Honeywell Safety Suite software. It's the same docking system used with other Honeywell BW™ detectors, so that means no new infrastructure

- **Get more done in less time with a unified docking system and software.**

Simply place one or more detectors in the IntelliDoX docking system, which automatically performs bump tests and transfers the data — including alarms, exposures, test results and more — to the software for intuitive analysis, compliance tracking and device configuration.

- **Test detectors with or without external filters.**

Want to use an external filter to protect the internal sensors from contaminants? With IntelliDoX, you can bump-test detectors with external filters attached, giving you a complete test of sensor performance and the appropriate calibration.

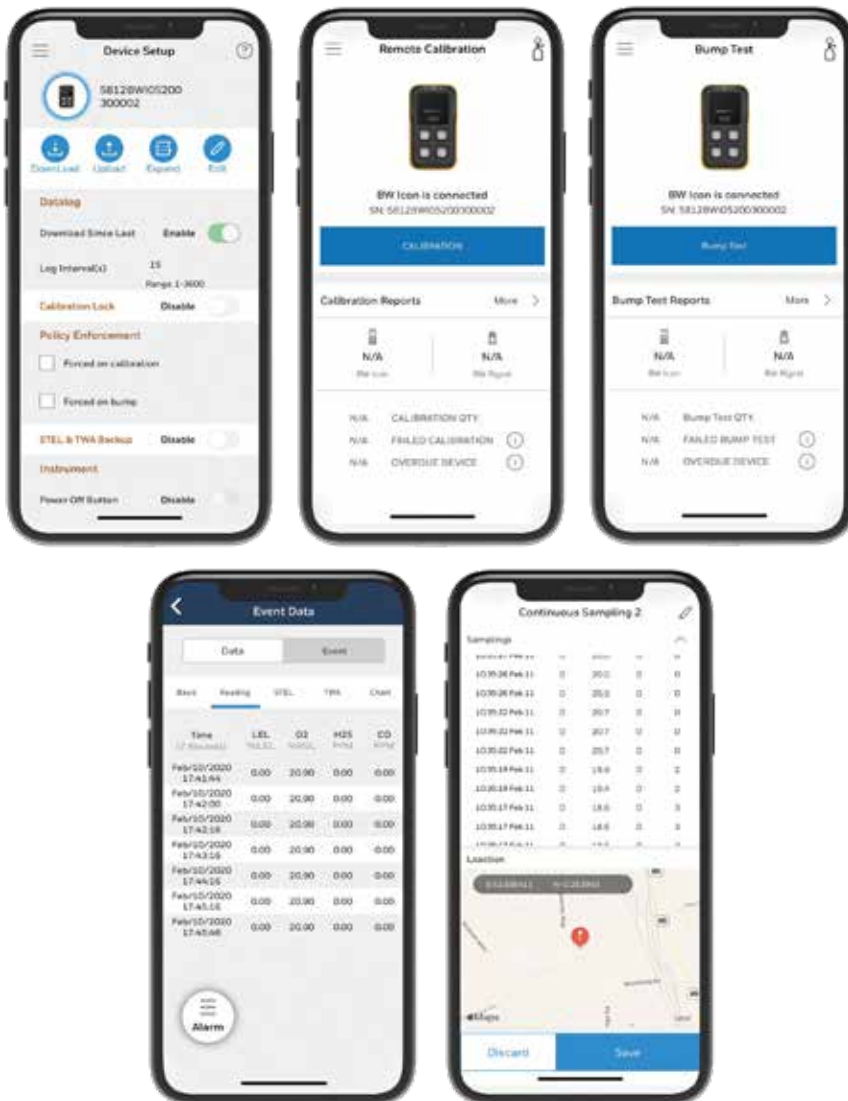


IntelliDoX

# COMPLIANCE REPORTING FROM YOUR SMARTPHONE

ICON/FLEX RANGE

To report a gas alarm on an Icon/Flex portable detector, simply download the Honeywell Safety Suite Device Configurator app, use Bluetooth® to pair your smartphone with the detector and open the app to see the data – all organized in a report that’s ready to go. Just hit send.



**KEEPING YOU CONNECTED TO SAFETY**

Bluetooth® connectivity — along with one-button operation, smartphone apps and clear compliance dashboards in Honeywell Safety Suite — make Icon/Flex multi-gas detectors some of the easiest to use in the industry.

# HONEYWELL BW™ ICON: THE SIMPLEST WAY TO PRIORITIZE SAFETY

HONEYWELL  
BW™ ICON

Honeywell BW™ Icon is a fixed-life, 2-year, 4-gas detector. That means you can turn it on and activate two years of protection, with no need for sensory or battery replacement — and no hidden costs. The detector simultaneously monitors the four gases that workers face most often, including oxygen (O<sub>2</sub>), hydrogen sulfide (H<sub>2</sub>S), combustible gas (LEL) and your choice of either carbon monoxide (CO) or sulfur dioxide (SO<sub>2</sub>).

## Icon-based display

Honeywell BW™ Icon is named for its display of simple icons for gas levels and device status — **the first of its kind in the gas detection industry**. That means no live gas readings for workers to interpret — and no time-consuming training.

## Fast decisions

When there's a gas alarm, the bell icon on the display will illuminate, along with an indicator next to the sensor in alarm, so workers can quickly clear the area.



## Easy-to-understand icons

In addition to two alarm bells, the display includes icons that illuminate for:

- TWA (time-weighted average)
- STEL (short-term exposure limit)
- Bump test due
- Calibration due
- Battery status
- Bluetooth®



## DATA AT YOUR FINGERTIPS

Want to see the full concentration of a gas? Or other information that's not on the icon-based display? Just pair the detector with your smartphone and use the Honeywell Safety Suite Device Configurator app to see gas data and send reports.

## SERVICEABLE VERSION: HONEYWELL BW™ ICON+

Want to maximize the lifespan of your 4-gas detectors and optimize long-term cost of ownership? Choose the serviceable Honeywell BW™ Icon+, which gives you the same icon-based experience, plus the option of a chlorine (Cl<sub>2</sub>) sensor for more flexible applications.

In addition, Honeywell BW™ Icon+ has **i-Series intelligent sensors for predictive maintenance**. Just check the Honeywell Safety Suite software to see remaining sensor life, sensor calibration schedules and more so you can prevent unexpected downtime.

# HONEYWELL BW™ FLEX: SERVICEABLE 5-GAS IN A SLIM SIZE

HONEYWELL BW™ FLEX  
Coming Soon!

Whether you're protecting workers or responders – in industries from marine and mining to paper and pulp – count on Honeywell BW™ Flex for the flexibility you need.

### Real-time gas readings

A clear-resolution display is available in a wide range of languages.

### Simultaneous monitoring of up to five gas hazards

For versatile application, choose from more than 15 sensors including sulfur dioxide (SO<sub>2</sub>), phosphine (PH<sub>3</sub>), ammonia (NH<sub>3</sub>) and others.

And thanks to its COSH sensor – combining hydrogen sulfide (H<sub>2</sub>S) and carbon monoxide (CO) into one –

**Honeywell BW™ Flex is one of the smallest, lightest 5-gas detectors available.**



### Predictive intelligence on sensor health

How much life is remaining in the H<sub>2</sub>S sensor, based on its age and gas exposure? When does the O<sub>2</sub> sensor need to be calibrated?

Honeywell BW™ Flex has i-Series intelligent sensors that answer these kinds of questions, giving you predictive insights through Honeywell Safety Suite on the health of your detector.

That means you can take the right action at the right time, ensuring reliable performance, reducing costs and preventing unexpected downtime.



# PROTECTING YOUR WORKERS AND YOUR ENTERPRISE

The Honeywell BW™ Next Generation Multi-Gas Platform is another way that Honeywell offers a comprehensive safety solution for protecting the lives of workers in hazardous environments.

## TURN SAFETY INTO A STRATEGIC ADVANTAGE

With these portable multi-gas detectors, Honeywell also helps your company turn safety into a strategic advantage — by improving workers' confidence on the job, increasing their productivity, reducing the cost of compliance management and preventing unexpected downtime.

## YOUR SAFETY IN MIND

As the world leader in industrial safety, Honeywell offers a comprehensive portfolio of head-to-toe personal protective equipment; fixed and portable gas detectors; and sensors, software, control systems and other connected technologies. It's all designed to help you protect your people, your assets and your profitability.

### For more information

[www.honeywellanalytics.com](http://www.honeywellanalytics.com)

Americas:

[detectgas@Honeywell.com](mailto:detectgas@Honeywell.com)

Europe, Middle East, Africa:

[gasdetection@honeywell.com](mailto:gasdetection@honeywell.com)

## ANSAC

**ANSAC TECHNOLOGY (S) PTE LTD**

35, Marsiling Industrial Estate Road 3,

#02-01 Singapore 739257

T: (65) 6368 0225 F: (65) 6368 8023

E: [sales@ansac-tech.com.sg](mailto:sales@ansac-tech.com.sg) | [www.ansac-tech.com.sg](http://www.ansac-tech.com.sg)

THE  
FUTURE  
IS  
WHAT  
WE  
MAKE IT